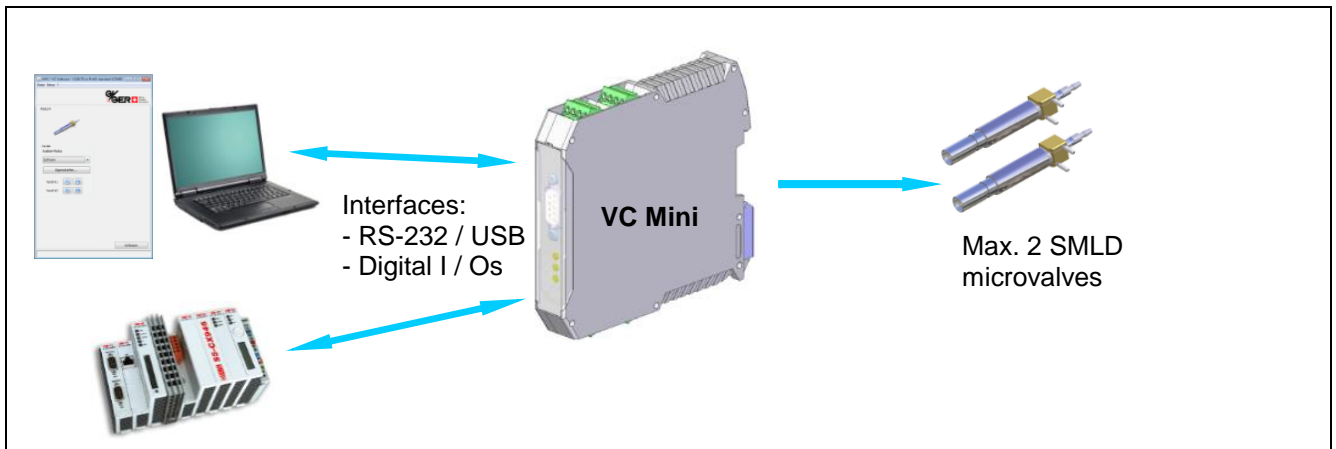


Valve Controller VC Mini



Complete Integrated Solution

The valve controller VC Mini provides a slim solution for dispensing applications depending on customer's need. The microvalves (max 2 per VC Mini) will be configured by a serial interface (RS232 or USB) via Java-Software or by direct commands. This allows customers, focused on the requirements of their applications, to integrate the VC Mini as an intelligent driver module in existing systems or to use it as a capable stand-alone solution.

Software

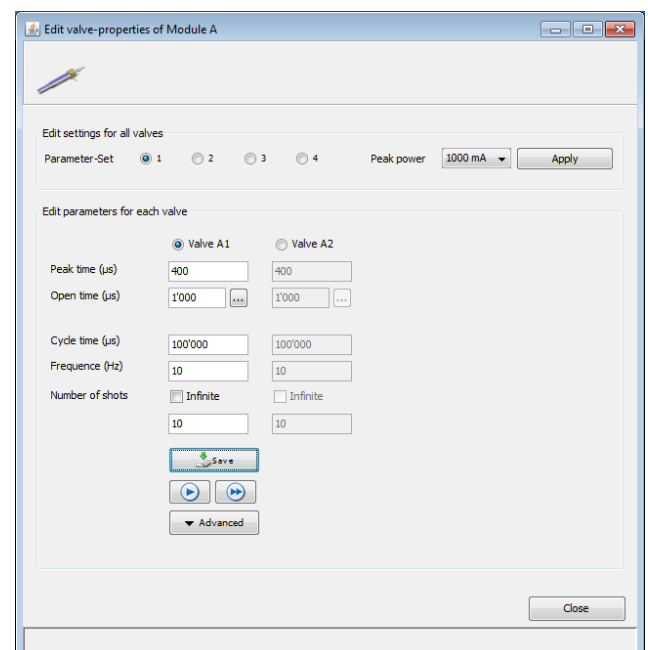
The MVC / VC Software (Java based) allows a comfortable handling via a graphic interface. A visualization of all functions can be seen within the software. The corresponding parameters (e.g. valve opening-time) can be easily set and tuned on the dispensing application. The functions can be controlled direct from the Software (e.g. triggering dispensing) and in addition different modes can be set, which allows the operation only over external Hardware-I/O-signals. Complete configuration can be saved on the hard disk and reloaded on demand.

Screenshots

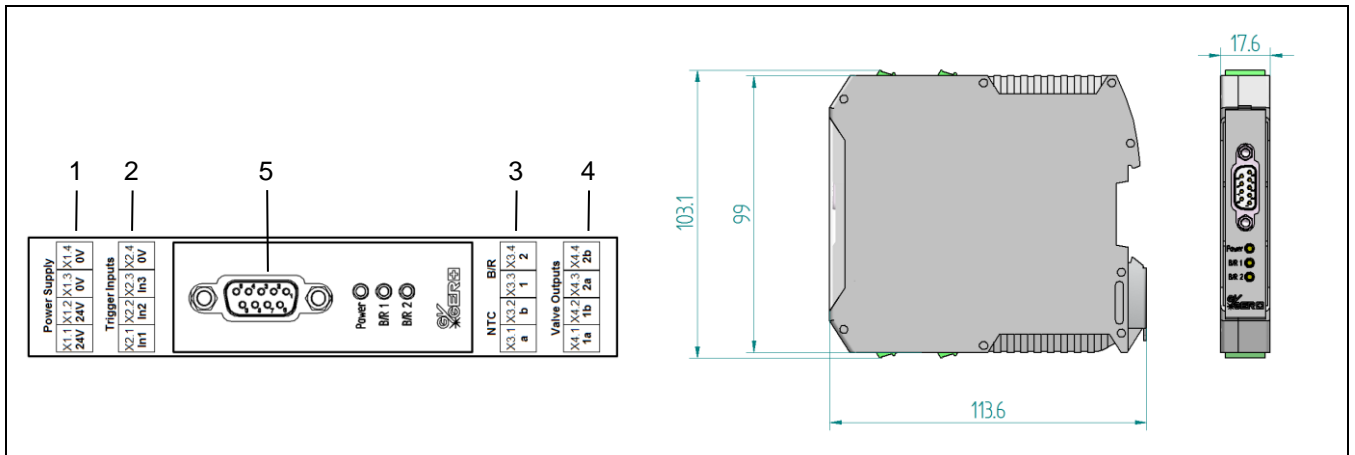
MVC / VC Mini Software main screen



Edit valve-properties



System Overview



General Specifications

1	Required Power Supply	24 V, max. 1 A
	Weight	0.1 kg
	Cabinet Size	113.6 x 103.1 x 17.6 mm
	Mounting	Cabinet prepared for mounting on a 35 mm DIN rail
5	Interface	Serial point to point connection (UART) via RS232 or USB
	Operating	- Graphic Windows-Interface with Gyger MVC / VC-Software (Javabased) - Alternative direct communication via commands over the interface
	Approvals	CE

Specifications of the Power Output (for valves)

4	Possible Functions	2 Microvalves SMLD
	Power Output	24 V DC, respective clocked for peak+hold drive
	Current Capacity	1.3 A short time, 0.85 A constancy

Specifications for signal inputs / outputs

2	Digital-Input	12 – 24 V DC, Rin 5.6 kOhm
3	Digital-Output	24 V DC, max. 0.5 A